

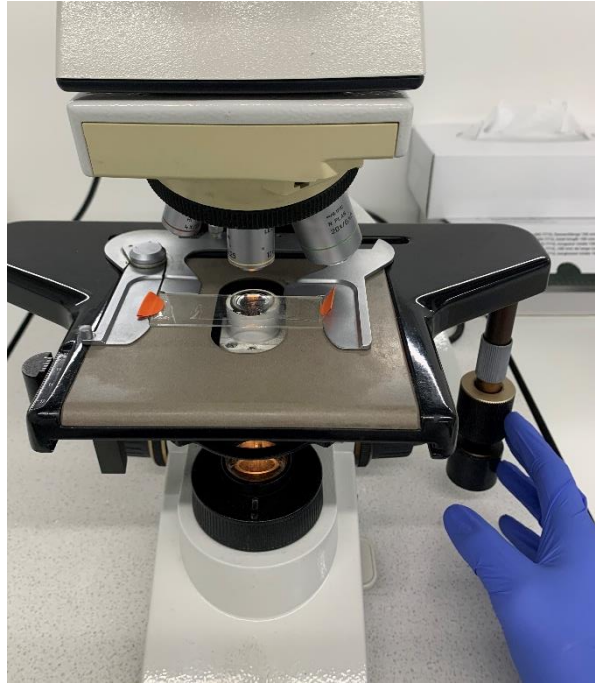


Swiss TPH



**Scotch-Tape-Test**

# Scotch-Tape-Test



- Wear gloves !!!
- Examine the slide under the microscope

# Scotch-Tape-Test



- In case of a infection with *Enterobius vermicularis* you will find eggs or even adult worms stick to the tape
- After examination and disposal of the slide, change gloves. Disinfect the microscope properly with Ethanol 70%.