



Swiss TPH



STOOLPREPARATION

BAERMANN

Stoolpreparation - Baermann

Material:

- Underlay
- Gloves
- Unchlorinated (ventilated) tap water
- Glass funnel
- Gauze
- Sieve (plastic)
- Wooden spatula
- Rubber hose with clamp
- Stand
- Erlenmeyer flask
- Falcon tube (50 mL)
- Lamp

Stoolpreparation - Baermann

- Attach the glass funnel to the stand and secure the rubber hose with a clamp.



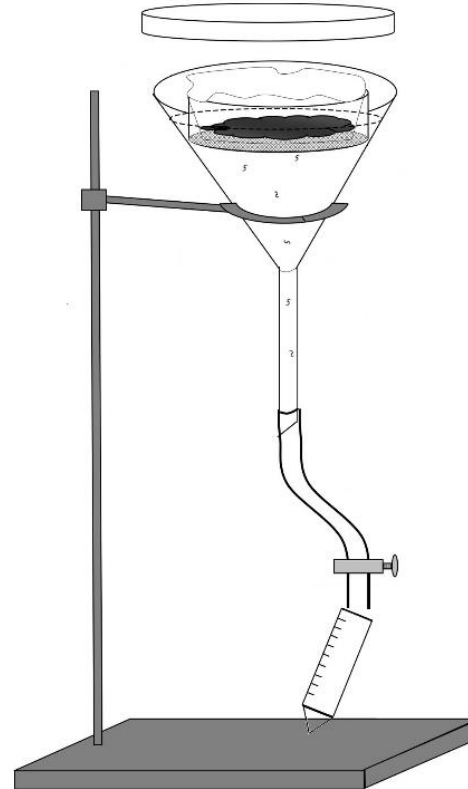
Stoolpreparation - Baermann

- Place a sieve gauze on top of the funnel.
- Fill the funnel with water



Stoolpreparation - Baermann

- Place a fresh stool sample into the sieve.
- Cover the funnel with a Petri dish to reduce odor emissions.



Stoolpreparation - Baermann

- After 2 hours, open the clamp and transfer the water along with the sample into a 50 ml Falcon tube. Then, centrifuge it.



Stoolpreparation - Baermann



- The entire sediment will be examined under the microscope using the 10x objective to search for larvae that need to be identified as *S.stercoralis*.
- It's essential to be aware that stool samples may also contain larvae of other nematodes.

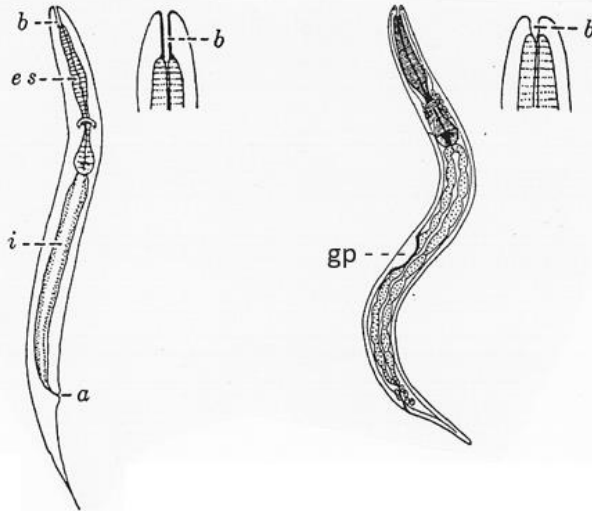
Stoolpreparation - Baermann

L₁: rhabditiform

Hookworms

Ankylostoma duodenale
Necator americanus

Strongyloides stercoralis



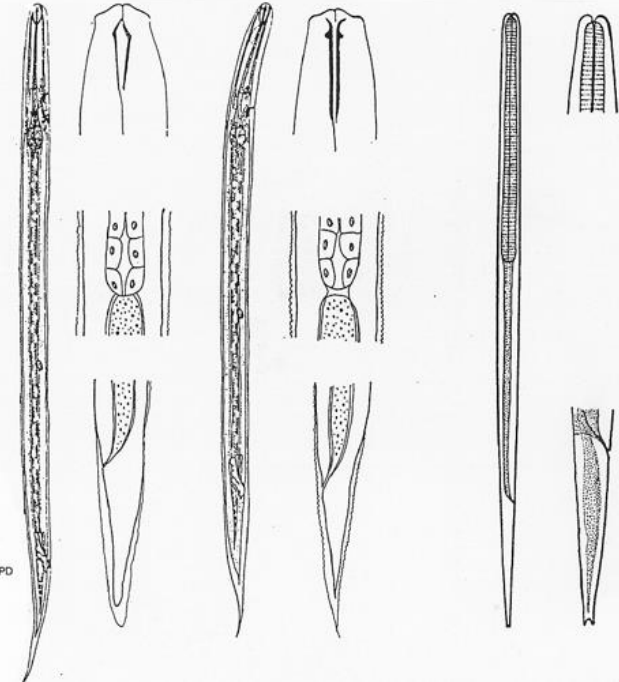
b: oral cavity
es: oesophagus
i: midgut
A: anus
gp: genitalic Primordium

L₃: filariform infectious

A. duodenale

N. americanus

S. stercoralis



C:\MYFILES\MERKBLÄTTER\H2\WHEZ.WPD